

ASSISTANCE GUIDE FOR MANOEUVRING SHIPS IN RESTRICTED WATERS

Advanced path-planing for harbour
approaching and berthing

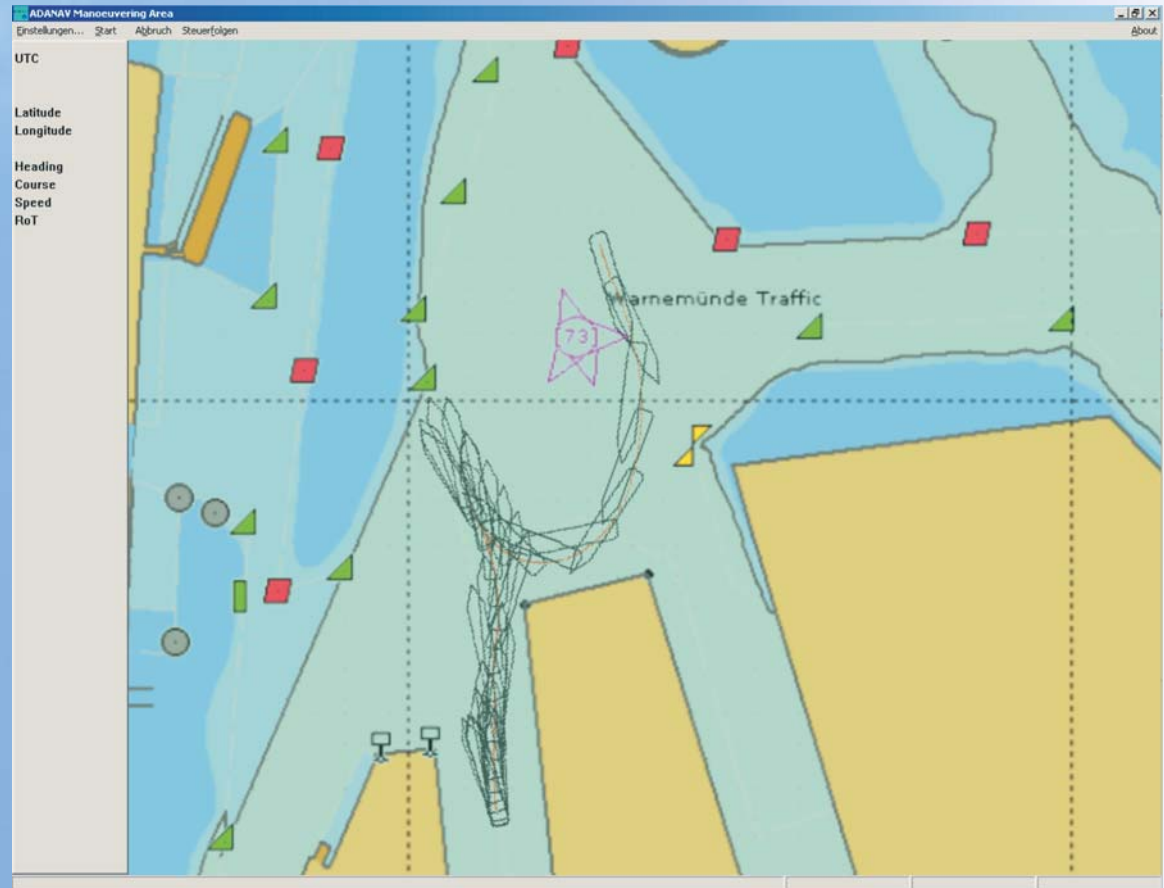
Decision support for manoeuvring
and positioning

Prof. Dr.-Ing. Reinhard Müller, Kpt.
Shipping Institute Warnemuende
at the Hochschule Wismar, University of
Technology, Business and Design
Richard-Wagner-Str. 31
D - 18119 Rostock / Warnemünde
Tel: +49 (0) 381 498 5830
Fax: 498 5802
email: reinhard.mueller@hs-wismar.de



www.adanav.de

Sponsored and supported by:



Features

- Determined path-prediction for manoeuvring in restricted water
- Permanent updating of ship's motion
- Recreating a path-prediction by dynamic adaptation
- Visual display of path-prediction

Advantage

- Exact positioning in restricted navigational areas
- Automatic waypoint setting with speed and heading profile
- Enhancement of manoeuvring precision
- Computer-aided navigation as additional support for manoeuvring in harbour waters
- Integration of computer-aided navigation into presently available products